

Fastman Extract Tool

Get the data out. Fast, clean, and ready to use.

Easily extract content and metadata from OpenText Content Management for audits, migrations, or reporting.



Fastman Extract Tool provides a reliable and structured way to extract content, metadata, and taxonomy from OpenText Content Management.

Designed for audits, migrations, archiving, and third-party integration, the tool supports both one-time and recurring extraction processes. Users can configure export jobs with selective filters, track job metrics, and produce outputs ready for use in other systems or stored for compliance purposes.

Why Fastman Extract Tool?

Extracting and sharing large volumes of content and metadata can be frustratingly manual, difficult to control, and prone to costly errors - especially when trying to support audits, migrations, or external collaboration. Fastman Extract Tool addresses these challenges by:

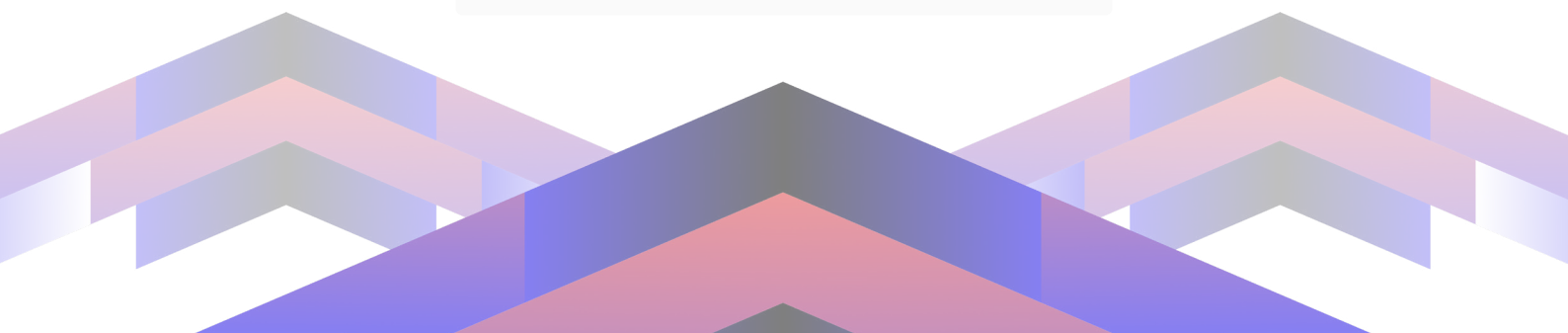
Reducing administrative overhead and eliminating repetitive, tedious tasks.

Enabling selective or bulk exports based on flexible criteria.

Ensuring teams can accurately extract and share content, metadata, and taxonomy information.

Enabling collaboration and monitoring, supporting compliance and auditability.

Freeing up team resources for high value work instead of manual operations.



Key features

Structured content extraction at Scale

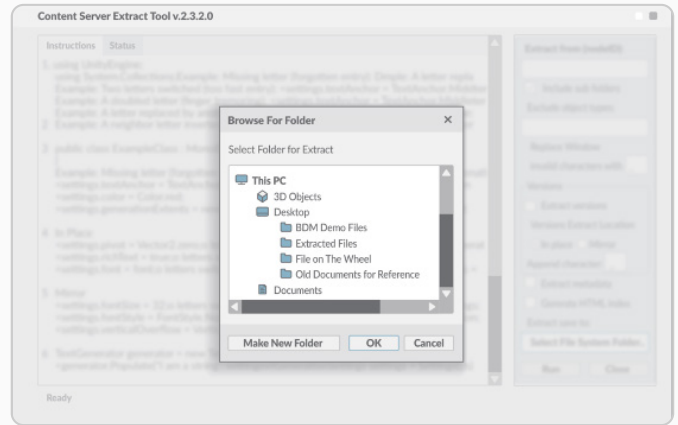
Export large volumes of content and metadata - including documents, folders, categories, forms, and workflow maps - based on object IDs or folder structures. Extraction can include subfolders, specific document versions, and naming conventions aligned with Content Management standards.

Flexible output options and HTML indexing

Extracted content and metadata are exported in XML format, with optional HTML index files generated to support quick browsing and validation. This makes results accessible for both technical and non-technical stakeholders and simplifies reviews during audits or data validation.

Detailed job monitoring and reporting

The tool provides granular reporting on each job, including timestamps, folder/document totals, line items per object, and extraction durations. These metrics support auditability and operational transparency and help teams quickly identify issues or validate completeness.



One-time or scheduled jobs

Run ad hoc extraction jobs as needed or configure repeatable jobs to support regular business processes, such as monthly compliance exports or staging for system migration. This allows teams to embed Extract Tool into operational routines with minimal manual effort.

Fast deployment, No server components

Extract Tool is deployed as a lightweight Windows application and connects to OpenText via web services. It requires no server-side installation, custom development, or additional infrastructure - ensuring rapid setup and adoption across teams. The solution supports both on-premises and cloud-based OpenText environments, offering flexibility for hybrid and modern deployments.

Common scenarios

From audits to migrations, these are just a few of the ways organizations put Fastman Extract Tool to work:

Audit readiness

Export and index required content and metadata to share with internal or external auditors.

Cross-system sharing

Export specific document sets and metadata to provide content to external stakeholders, vendors, or partners.

Project-based extraction

Enable teams to export relevant workspaces or collections for review, handoff, or transition.

System migrations

Extract data from existing repositories in a structured format ready for re-ingestion or archiving.

Backup & offline access

Generate periodic exports of critical content for retention, long-term access, or reference outside the system.

Part of a complete Information Governance strategy

Fastman Time-Based Access is part of the Fastman Management Suite - a collection of advanced solutions designed to streamline governance, control, and administration of OpenText Content Management.

From permissions and access to bulk data updates and e-signature integration, the suite helps reduce IT workload, improve compliance, and empower business users across the content lifecycle.

